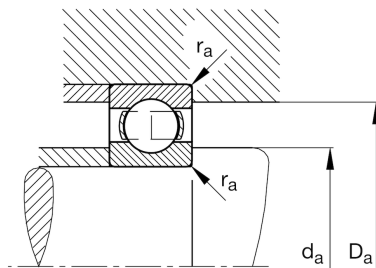
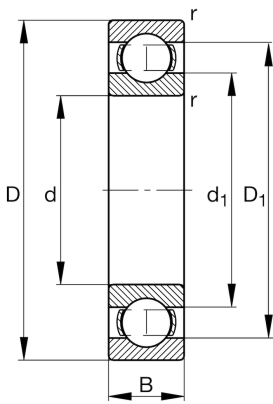


**FAG****6052-M-C4**

Deep groove ball bearing

Schaeffler ID:
0167187980040Deep groove ball bearing 60...-M, single
row, solid brass cage

Technical information

**Main Dimensions & Performance Data**

d	260 mm	Bore diameter
D	400 mm	Outside diameter
B	65 mm	Width
C_r	310.000 N	Basic dynamic load rating, radial
C_{0r}	405.000 N	Basic static load rating, radial
C_{ur}	14.300 N	Fatigue load limit, radial
n_G	2.750 1/min	Limiting speed
n_{gr}	2.250 1/min	Reference speed
$\approx m$	29,8 kg	Weight

Mounting dimensions

$d_{a \min}$	274,6 mm	Minimum diameter shaft shoulder
$D_{a \max}$	385,4 mm	Maximum diameter of housing shoulder
$r_{a \max}$	3 mm	Maximum fillet radius

Dimensions

r_{\min}	4 mm	Minimum chamfer dimension
D_1	357,5 mm	Shoulder diameter outer ring
d_1	304,05 mm	Shoulder diameter inner ring

Temperature range

T_{\min}	-30 °C	Operating temperature min.
T_{\max}	200 °C	Operating temperature max.

Calculation factors

f_0	15,7	Calculation factor
-------	------	--------------------